



Pupils That Matter

WELCOME TO YEAR 2

2025/2026

Year 2 - Teachers



Mrs Cuffaro and
Mrs Goldhawk
Hazel Class



Mrs Bolger
Juniper Class

Year 2 – Learning Support Assistants (LSAs)



Miss Brown
Juniper Class



Mrs Ward
Juniper Class



Mrs Devereux
Juniper Class



Mrs Timpson
Hazel Class



Miss Westbrook
Hazel Class

Hazel - Where will you wait in the morning?



Hazel Class

Elm Class

8.40 – 3.15

8.40 – 8.45 - doors open

Registers close at 8.50 after this time the child will be marked as late and then absent from 9.20

Hazel Classroom



This is Hazel classroom. There is a shared cloakroom with an older class- this is where your child will hang their coat and bag. One of the pegs will have your child's name on so they know where to put their things.

Juniper - Where will you wait in the morning?



**When you arrive in the morning, you will wait
just outside your classroom door
(doors will open at 8.40 and close at 8.45)**

Juniper Classroom



This is Juniper classroom. At the back of the classroom is the cloak room- this is where you will hang your coat and bag. One of the pegs will have your name on so you know where to put your things.

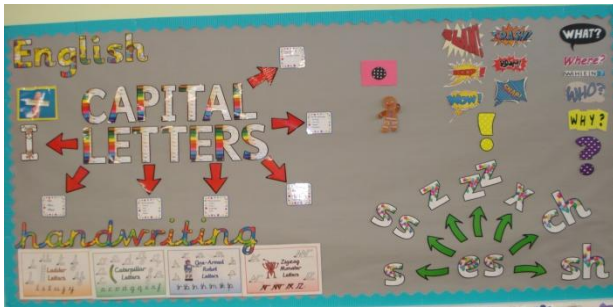
Our Playground

Break – 10:30am-10:45am

Lunch – 12:00pm – 13:00pm –
children will play across the 31 opal
zones across the outdoors.



What will a day look like in Year 2?



From the very beginning of the school year, we ask for parents to say goodbye at the door and to not enter the classrooms, this will hopefully develop their independence.

Throughout the day we will be doing a lot of fun learning. There will be morning English and Maths sessions and an afternoon topic session. Phonics/spellings will take place everyday.



Each morning the children will be provided with a free piece of fruit for their snack.



The children who are having school dinners will order their meal via our school lunch system with the help of an adult.

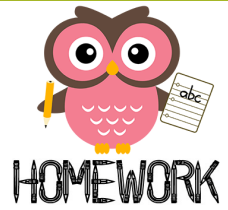
Having completed the learning for the day, we will see the children out. Please let staff know if someone different is picking up your child and that they have the correct password.

In the classroom

- Children will have an allocated seat and carpet space. These will change several times a year. Please let us know if your child has a hearing or eyesight issue so we can accommodate this in class.
- Children are expected to look after their resources and treat them with respect. They are also expected to keep their table and drawer tidy.
- If your child has shoulder length hair, or longer, then they should have their hair tied up at all times. Any hair accessories must be small and if your child chooses to wear a bow it should be green to match our school uniform.
- If your child has laced shoes, please make sure that they are able to tie these themselves.
- We do not do 'show and tell' in Year 2 but if your child has a certificate, artwork or an award and they want to show off please send it in on a Friday.
- Children are encouraged not to bring in any toys from home. The classroom adults cannot be held responsible for them getting lost or broken during the school day.

Homework at PTM

- To help support children in school and to prepare them for their next stages of education children at PTM are asked to complete weekly homework. This is not expected to take a long time and should be appropriate for the age of your child.
- Children will be given a homework book at the beginning of the year and this is where homework should be completed.
- Children have regular daily / weekly homework to complete. This is daily reading, practising weekly spellings and times tables. Records of these can be shown in homework books. They will also have a creative homework once a half term.



Homework - reading...

- Children will be given a rainbow book – these are a coloured banded book and are at the level that the children are reading at. Children will work through the levels and are encouraged to re-read books to help aid their fluency.
- Children will also be given a library book to read for their pleasure.
- 30 minutes of reading will need to be completed over the week. At least half being listened to by an adult or adult discussion about the text.

Our Learning

We are very excited about our learning next year, with a new and interesting curriculum!

In the autumn term, we will be teaching Arctic Adventures. We will learn about Arctic explorers, the Inuit way of life, Aurora Borealis, ice and its properties, Arctic animals, and so much more.





Spring Term

In English we will be learning about the Great Fire of London and Samuel Pepys!

Our experience will be all about castles. The children will find out about the Battle of Hastings and explore medieval castles and their features.

Summer Term

In the summer term, we will be learning about Africa! We will be looking at the geography of Kenya and comparing it to the UK. Pack your imaginary bags! We are going on safari! We will watch a live safari online and hopefully spot some wildlife. We will also try out some African art and maybe even make some jewellery or a mask!

Resources to aid our learning

We use a range of different equipment to support learning in maths. In the picture you can see; number lines, straws, times table cards and dienes.

Dienes are a fabulous resource, and we use them a lot in class.

In writing, we use a range of equipment and experiences to help the children reach their potential.

We use word banks, interactive displays, modelling by the teacher, sound charts and many other things.



OPAL PROGRAMME

Children spend over 6 hours of their school week playing at break and lunch times. The opal project sets out to give children a wide variety of play experiences.

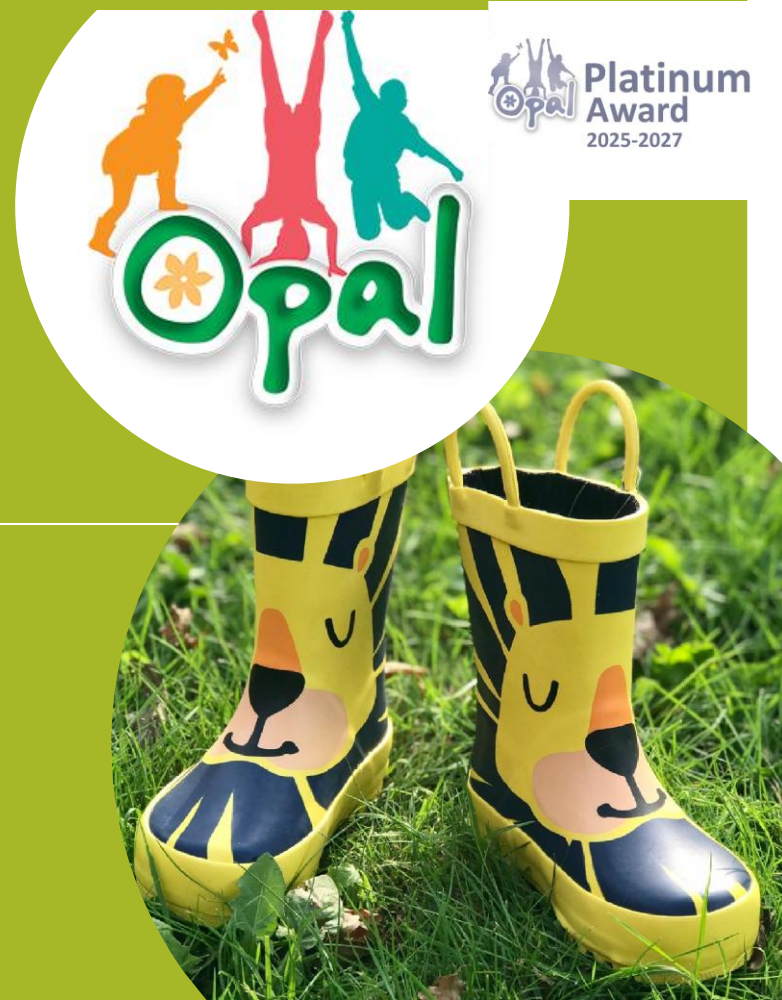
At PTM this includes over the two playgrounds and the field all year round for all children– bikes and scooters, sand pit, digging area, book nook, construction, arts, water area, large loose parts, theatre, tyres, mud kitchen and small world toys. All children can play across any of the 31 zones.

Some areas of our OPAL play spaces children must have wellies to use. Please ensure your child has wellies on the welly rack. Children are advised to have a spare pair of clothes with them incase they get muddy or wet. Children need a warm, waterproof coat and trousers. There is opal sways for you to see what goes on during an opal lunchtime.

We are always looking for OPAL donations and parents to help us out with new areas around the school.

Children in Key Stage 2 are allowed to eat their packed up or picnic bag outside.

We have now been awarded Platinum status for our play offer. This puts us as school in the top 1% of the country for play opportunities.



At Pear Tree Mead we are extremely lucky and proud to have a furry edition to our staff. His name is 'Numbers' and he is a qualified dog mentor.



Numbers is currently training on the job and learning what it is like to be a part of our amazing team. He has four handlers - Mrs Arnould, Mrs Peden, Mrs Davies and Mrs Thurgood.



Numbers works with the children, settling them into school, becoming a listening ear and someone that they can share their thoughts with. All children will be educated on the rules we follow when around Numbers.

PE and Swimming

Please ensure that the children have the correct kit in school with them on the appropriate days.

For swimming, children will be expected to have a swimming costume/trunks, a towel and a swim hat. Goggles are optional. Swimming does cost £3 a session and should be paid for via Arbor.

PE kit should be in school all the time. In the colder months, tracksuit bottoms, a PE top (in the child's house colour) and a tracksuit jacket are expected. When the weather improves, PE shorts are advised.

Each item needs to be clearly named.

Jewellery must be removed.

PE and swimming dates to be confirmed.



Labelling Uniform

It is very important to label all your child's uniform/belongings.

Below are two companies who can help with this. By choosing one of the following, you will not only have solved the problem of how to label uniform but also be supporting Pear Tree Mead Academy!

Stampastic –

https://stampastic.co.uk/#a_aid=5edcc47baf3eb

School Affiliate ID: 5edcc47baf3eb

School PTA Code: CM187BY

My Name Tags -

<https://www.mynametags.com/>

School code - 68o6

School Uniform

At Pear Tree Mead we feel that wearing school uniform is really important. It brings us together as a school team.

- Round neck sweatshirt with embroidered school crest (bottle-green)
- Cardigan with embroidered school crest (bottle-green)
- Pupils must also include:
- White polo shirt/blouse
- Grey trousers / knee-length skirts
- Shorts and summer dresses can be worn in warm weather.
- Black shoes (with suitable heels) or trainers (with black shoelaces)
- White, black or grey socks or tights

School PE kit

House Colour Joma T-Shirt

- Joma Shorts (black with school crest)
- An outdoor PE tracksuit
- Sports socks (black)
- Black trainers or plimsolls, swimming costumes, towel and swim hat.

All children need wellies at school every day.

The school has a uniform and children are expected to adhere to this. The children wear their uniform with pride and should be smart with shirts tucked into trousers or skirts.

School uniform is supplied by Create Identitee, it can be ordered directly with them at their shop Unit 43 Greenway Business Centre, Harlow, Essex, CM19 5QE, or over the telephone 01279 456016. Order forms and samples of sizes are available at the school office.

Lost Property – all named lost property will be returned to classes. All unnamed items are kept outside the office for parents to come and look through.

The FOPTM team run a second hand uniform sale if you require any extra support.



What's for Lunch?

DELICIOUS DINNERS!

Not only are our lunches healthy and sustainable but they're also delicious! We've got a wide variety of options available, including both meat and vegetarian dishes, jacket potato and a cold choice and then hot and cold desserts. We try to make sure that there's a lunch option to suit everyone - that's why menus based on feedback from the pupils, our cooks, teachers, parents and carers.

In Year 2 all children are entitled to a free school dinner.

Lunchtime Information

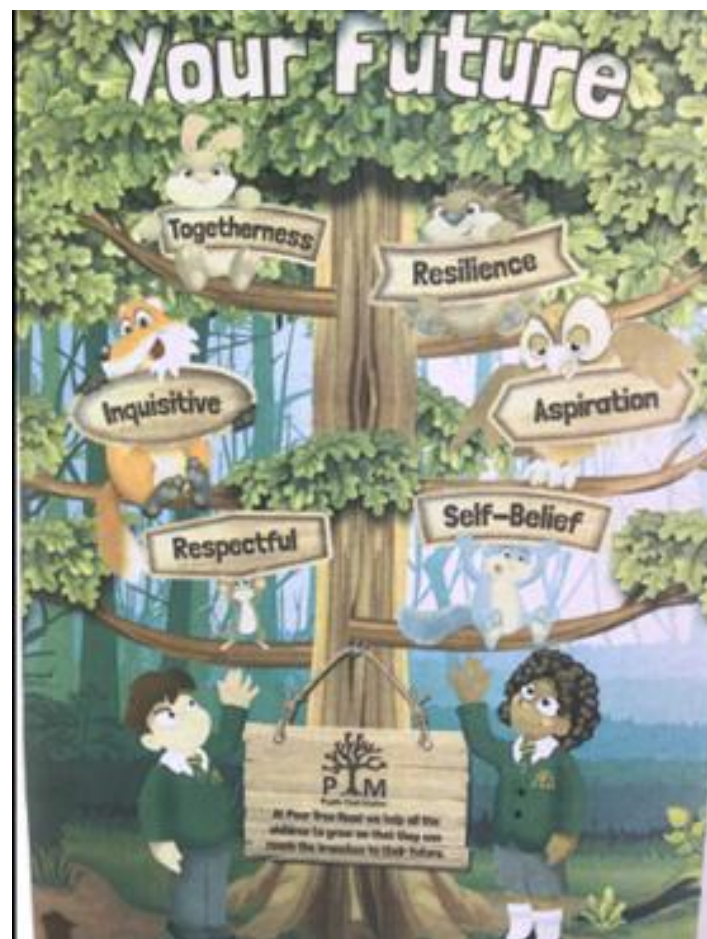
[FHM Parent Comms 2025 \(digital\).pdf](#)

- Above is some more information about our school dinners. This is available at the end in paper copy if you would like one.
- Children can have a school dinner on each day that they book one. Children can change between school and home lunches each day as required.
- Children can choose from our unlimited salad bar every day.
- Children who have allergies will not be able to have a school dinner until their special menu is agreed. If your child has any allergy you will need to complete the correct forms and then wait for an agreed menu.
- Copies of the school menu for September are available at the end if you would like one. A new menu will start after October half term and this has been designed by the children.
- [Parent How to Guide.pdf](#) - you can book school dinners from home.

School App and Contacting you.

- Please make sure that the school has your most recent details so that you can be contacted via the phone and that you have access to the school app. (ARBOR)
- PTM are nearly cashless – please make sure you set up your Arbor app and make payments through it. Swimming is to be purchased next year via the app too.
- The school is fully paperless and all information can be found on the school app via email and on the school website.

Pear Tree Mead Academy – School Vision and Motto



Behaviour - PTM Branches

At Pear Tree Mead we help all the children to grow so that they can reach the branches to their future.

To become a fully grown citizen, children need to reach the branches of the Pear Tree.



Pear Tree Mead Academy Expectations

Be Ready – ready to learn, ready to inspire, ready to listen

Be Kind – kind to others, kind to ourselves

Be Safe – safe in what we are doing, where we are, what we are accessing

BEHAVIOUR

Behaviour expectations

Children are expected to:

- Focus on their learning
- Work hard
- Use kind hands and bodies
- Use kind words
- Support each other in their learning
- Work together in pairs or groups
- Put their hand up to speak
- Stay in their seat when it is learning time
- Follow the school behaviour policy.
- We use house points, stickers and Class DOJO as reward systems.
- Most importantly – have fun, laugh, make great memories, learn lots and go home smiling!



Behaviour Recognition

Children receive recognition for work, expected behaviour and effort. We have a structured behaviour system where children can be recognised for exemplary behaviour (above and beyond) or for reaching (or striving towards) each branch on the tree (achieving the skill).

Positive note home – this is a certificate that is given to a child when they have shown behaviour that is 'above and beyond' – this is for them to take home. Positive notes home are also given to visitors to the school, who have the opportunity to give then to a pupil if they see exemplary behaviour.

Each positive note home is recorded on the class recognition chart. When pupils have enough positive notes home, they will receive a phone call home! Further notes home will amount to them being invited to a 'hot chocolate day' run by the Headteacher, Deputy Headteacher or Assistant Headteacher, where children will have a little hot chocolate treat and time with the leaders of the school. When attending, children can also collect a Headteachers award!

Headteachers Awards are also awarded for hard work and exceptional effort in class.







- The children are arranged in house teams and can earn points for their house. House points are given out with a maximum of 5 at each occasion. A special treat is organised for the winning team each half term.
- Children can receive a Headteachers Award for excellent work and effort in their learning.
- We also have a 'Thank You' box in the main office where staff, parents and children can write messages of thanks to all school groups. These are shared in Assembly. This supports well-being within the school across all stakeholders.
- At lunchtime, our MDAs oversee the hall and playgrounds. We have agreed protocols for the children. Miss Burke oversees the MDAs and liaises about behaviour. We run a recognition stripe at lunchtimes, where individual children are given a strip of paper to recognise their super behaviour at lunchtimes. This is to add to the paper chain that they are creating in class, when the children have collectively achieved 100 recognition stripes, they earn themselves extra play/lunchtime.

What if you are not doing the right thing

- Appropriate consequences will be given, taking into consideration the child
- We will communicate behaviour and consequences with the child's parents where necessary, and only that of their child, not any other pupils' involvement
- In extreme instances, where behaviour is continuous, over time, or for one large incident, the pupil may face suspension for a fixed period (this will be communicated with parents and formally by letter). Incident(s) can include the pupil putting themselves or others at risk, safety of them or others and/or verbal/physical harm.

Zones of Regulation

The **ZONES** of Regulation®

			
BLUE ZONE Sad Sick Tired Bored Moving Slowly	GREEN ZONE Happy Calm Feeling Okay Focused Ready to Learn	YELLOW ZONE Frustrated Worried Silly/Wiggly Excited Loss of Some Control	RED ZONE Mad/Angry Terrified Yelling/Hitting Elated Out of Control

- At Pear Tree Mead we teach the children important skills in regulating their own emotions and understanding the emotions of others. We start this learning in Reception where the children learn through the Zones of Regulation curriculum. The Zones are four coloured zones that relate to different types of emotions. The children will be taught how you may look, feel or behave when you are in these zones and how it is okay to feel different emotions. They will begin to be taught how to use different tools to regulate their emotions.

- If you would like to find out more, please visit our website: [Pear Tree Mead Academy - The Zones of Regulation](https://www.pear-treemeadacademy.co.uk/the-zones-of-regulation)



The Treehouse Club

Clubs

- We have a breakfast Club that runs every day – this is £3.50 and is run by the school.
- This can be booked via Parentmail
- We have an after-school club run by the school. This is booked via Parentmail.
- The Treehouse Club runs between 3.15pm and 4.10pm for a themed activity session.
- Night Owls runs between 4.10pm and 6pm. Children have a small snack in Night Owls. **From September we will be able to take child care vouchers for breakfast club and after school club**
- Registration forms must be completed for Breakfast Club and Our After school Club.
- Children can join Rock steady – rock band at PTM. This is run by an external company and has a termly charge. You can find out more information from <https://www.rocksteadymusicschool.com/>
- Watch this short video to see what learning in a band could do for your child's well-being: <https://www.rocksteadymusicschool.com/watch-video/>

Attendance – Every Day Counts

Will your child be a PTM
Attendance Hero next year?

Being here every day, and on
time, really helps your child be
happy, successful and get the very
best from their education.



Attendance

Did you know...

being late regularly can soon build up many hours of lost learning?

A pink alarm clock with two bells is shown on the left. To its right is a yellow and black comic-style speech bubble with the words 'WAKE UP!' in bold, black, capital letters. The background of the entire graphic is a dark blue gradient.

Getting Your Child to School Really Matters

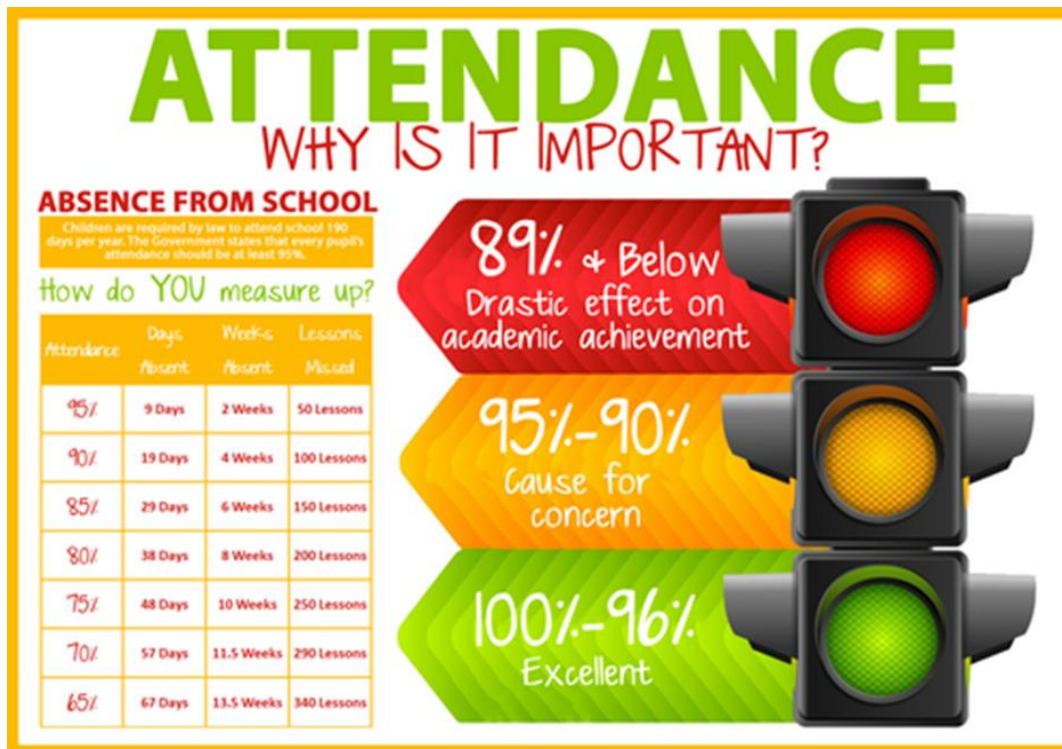
Did You Know... ?

In a School Year, If Your Child is Late Every Day By...	Your Child Would Have Lost Approximately...	or They Would Have Missed Approximately...
5 Minutes	3.5 Days from School	20 Lessons
10 Minutes	7 Days from School	41 Lessons
15 Minutes	10 Days from School	55 Lessons
20 Minutes	14.5 Days from School	82 Lessons
30 Minutes	22 Days from School	123 Lessons

Please Encourage Punctuality to Maintain Attendance

Attendance

Regular attendance is so important as just 2 weeks off school in a year will mean your child misses 50 lessons!



For more information on the school's policy regarding attendance please visit our website:

[Attendance - Pear Tree Mead Academy](#)

Assessment

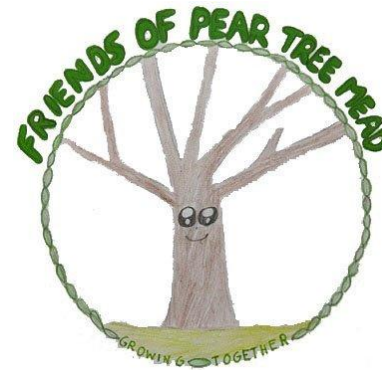
Your child will be assessed throughout their learning, in day-to-day tasks but they will also encounter formal assessments for English and Maths on a termly basis. Teacher assessments will be included in parent consultations and your child's annual report.

The class teacher will be providing each parent with an end of year judgement. This will tell you the standard your child is working at in English reading, English writing, mathematics and science, by the end of key stage 1.

Children who did not pass their Year 1 phonics screening test will also resit this in Year 2.

'Friends of Pear Tree Mead' (FOPTM)

How do we fundraise?



Events include:

**Halloween Disco
Disco**

**Easter Fayre
Christmas Bazaar**

**Summer Fete
Summer Splash**

**Break the Rules Day
Present Sales**

**After School Film Club
Family Race Night**

**Singo Bingo
Production photos**

After School Cake Sale

- We are a community of volunteers who help out at events hosted by FOPTM, it's a way to meet other parents and make new friends whilst supporting the school.
- We run a variety of events throughout the year with the aim to ensure that whilst profitable, our events are affordable to all families.
- Some of our events are for pupils only, but we also run family events after school, in the evenings and at weekends
- We run present sales at Christmas, Mothers Day and Fathers Day to enable children to choose a pre-wrapped gift
- At all school productions we sell to order from a selection of production photos taken during the class dress rehearsals.
- We also raise funds by using our clothing bin, pre loved uniform and asking organisations to match funds on stalls at larger events like our Summer fete and Christmas Bazaar.
- FOPTM is a separate entity to the school – If the school want FOPTM to fund something they have to request it in writing and it is put to a vote at our termly FOPTM meeting. Equally, if we want to run an event at the school, the school staff are given the option to assist on a voluntary basis.
- All FOPTM can be found on our FOPTM facebook page. Please join for more information

- We have a small team of parent volunteers who work tirelessly to manage the collection and sale of pre-loved uniform. Please ask if you need any pre loved uniform or donate any if you have anything to donate.



We also have a clothes bank at the front of the school. This is collected regularly and money is donated to the school.

What have we funded?

World Book Day Play
Christmas Panto
New bins around the
school
Welly Storage
Supported Young Voices
Bikes and Scooters for
Opal
Opal equipment
Curtains for the small hall
Outdoor Gym
Pond works
Swimming pool works
Climbing frames





Proud sponsors of:

Jukes Estate Agents Harlow are delighted to announce a fantastic referral scheme which can help raise much needed funds for Pear Tree Mead Academy



If you, or anyone you know in Harlow or surrounding areas are thinking of selling your property, Jukes Estate Agents Harlow will:

- 1. Value it FREE OF CHARGE**
- 2. Sell it with NO AGENCY FEES**
- 3. Market it better than ANY other agent**
- 4. Donate £500 to The School on completion of sale.**

How good are we? Ask Executive Head Emma Bloomfield.

We sold her house in 10 days and for full asking price. When it completes, the school will be £500 richer! So call us today.

01279 295524

We are pleased to work in partnership with local estate agent Jukes. As part of our work with them, they will be sponsoring all PCLC schools, helping to fund new sports kits for our teams, supporting resources needed for our curriculum work as well as providing help to our PTAs.

In addition to this Jukes will donate £500 to the school for any property sale they make. So if you, anyone in your family, a friend or neighbour are looking to sell your home, please consider using Jukes Estate agent, give them our name and we will receive £500.

How can you help?

Every event we run requires manpower to source materials, set up, and host the event on the day. Without parents who are willing to give up their time, we simply would not be able to run things like school disco's, present sales, fetes and bazaars – All the things we know the children love!



We are desperately short of volunteers, with quite a few of our 'regular' parent helpers moving on to secondary school this year.



If you would like to get involved, please come along to a meeting to see what you can do to help – You can give up as much or as little time as you are able and there are always a variety of tasks to suit everyone's individual commitments and skills. Our meeting dates are published via parent mail and our facebook page, which will also keep you up to date with upcoming events where help us needed.

PEAR TREE MEAD ACADEMY GOVERNOR RECRUITMENT



The Governing Board is in urgent need of parent views to expand our capability. At present, the Board is under-represented in this area, leading to limited capacity for Governors to make sure the school is led adequately with all views represented. Without your help, this could put us at risk at our next Ofsted visit.

We need to recruit two people who can represent parents' views on the Governing Board. As a volunteer parent governor, you will have input to the way our school runs, and your invaluable point of view can help to shape our children's futures. You should be excited about helping the school in being the best it can be, so that it will make our children exceptional. You should be able to attend board meetings in the evening – these are currently done via Zoom and are three per term. You will be allocated part of the school or curriculum to oversee, and this may involve meeting with teachers during school hours, or asking questions by email.



You do not need any formal qualifications, but you must be IT literate. At the very least you should be confident in using email and electronic communications (e.g. Zoom). All we ask is that you are an independent thinker who is able to bring a parent's view to the table, and that you are interested in getting involved in your children's education. In return, you will get full training, and will be part of a friendly team.

Think you might be interested?

Please contact the school (kate.townsend@peartreemead.essex.sch.uk) & someone will get back to you. Please provide a bit about yourself, and why you think you might be suitable for the role.

PARENT GOVERNOR VACANCIES

If you have a concern or query...

If you have a concern or query at Pear Tree Mead Academy, please speak to the class teacher first. After that they will be able to direct you to someone else to speak if you would like to.

Our website shows all members of staff.

[Pear Tree Mead Academy - Meet The Team](#)

We look forward to seeing you for our transition week at the end of term.