

# Welcome to Nursery

---

2025-26 Cohort





# Meet the team

---

Who will I be working with?

# The Adults in Nursery

---



Mrs Burland



Mrs Menevilli

Mrs Burland and Mrs Menevilli will be supported by other members of staff during the day.

# Classes

---

The nursery classes work together and free flow for the majority of the session. The children have the opportunity to interact with all adults across the settings. For registration and adult focused learning sessions they are split into 2 classes. These are called Ash and Aspen.



Ash is our 15-hour provision and Aspen in our 30-hour provision.

# School Uniform

---

- Round Neck Sweatshirt or Cardigan with Embroidered School Crest (Bottle Green)
- White polo shirt/blouse
- Grey trousers/knee length skirts
- Shorts and summer dresses can be worn in warm weather.
- Black shoes (with suitable heels) or trainers (with black shoelaces)
- White, black, or grey socks or tights
- For Outdoor learning
- Black trainers or plimsolls
- Swimming costume, towel, and swim hat.

The school has a uniform and children are expected to adhere to this. The children wear their uniform with pride and should be smart with shirts tucked into trousers or skirts.

School uniform is supplied by Create Identitee, it can be ordered directly with them at their shop Unit 43 Greenway Business Centre, Harlow, Essex, CM19 5QE, or over the telephone 01279 456016. Order forms and samples of sizes are available at the school office

Please name all of your child's clothes and belongings



The following links take you to 2 companies that provide the PTA with a % of your purchases to help to raise money for the school.

Stamptastic - [https://stamptastic.co.uk/#a\\_aid=5edcc47baf3eb](https://stamptastic.co.uk/#a_aid=5edcc47baf3eb)

School Affiliate ID: 5edcc47baf3eb

School PTA Code: CM187BY

My Name Tags - <https://www.mynametags.com/>

School code - 6806





# What will a day be like?

---

Let's see how your day will start

# When I come into school:

---

You will come into the Nursery outdoor areas through the Trotters Road gate. You will put your water bottle/lunchbox on the trolley and book bag in the basket. You will play outside first for a while, then:

- You will put your coat on your own peg (this will have your name on it).
- You will place your name on the self-registration board.
- Then it is time to get busy with your friends by exploring the activities in the classroom.



# Things to bring

---

## Every day:

- Correct school uniform and hair tied up (if longer than shoulder length). **Please name all uniform**, even socks and shoes. We have 60 sets of identical uniform and we can help lost items get back to the right owner if things are clearly labelled. The uniform shop will embroider initials on for a small charge.
- Water bottle to keep in the classroom (we encourage children to drink water only).
- We ask that children do not bring toys into school. If they need a toy from home for comfort then this must be put in their book bag before coming into the classroom.
- At snack time the children have a piece of fruit or vegetable (free of charge from the National Fruit for Schools scheme).
- Children in Aspen need to bring their lunchbox every day.

## Each week:

- Any homework (when specified)
- Children will have a book to share with adults at home. This will be changed weekly, on a set day.
- Swimming kit and £3 contribution once a week - swimming will take place in the Summer term. The day will be confirmed nearer the time.
- Book bag (**labelled clearly**) every Friday.
- Plimsols for PE if the children would like to wear them

# School App and Contacting you.

- Please make sure that the school has your most recent details so that you can be contacted via the phone or through group -calls and that you have access to the school app. (Arbor)
- PTM is nearly a cashless school – please make sure you set up your Arbor app and make payments through it. Swimming is to be purchased via the app too. Snack and FOPTM events are still cash.
- The school is fully paperless and all information can be found on via emails, the Arbor app and website..

# Your day:

---

Throughout the day you can explore the activities in both classrooms and in the Early Years garden. They are set up to support the topic and the 7 areas of the Early Years curriculum (information is available on our website about what the children are learning each term).

Sometimes you will choose how you learn and play with your friends; at other times you will complete activities with adults.



# Your day:

---



Across each day there will be 2 whole class teaching sessions for Ash, and 3 for Aspen. This includes daily phonics and lots of other sessions linked to the Early Years areas. For most of these you will sit with your class on the carpet area.



Each day you will have snack. We have lots of different food to try, including a variety of fruit and vegetables and things like dips, biscuits, yoghurt and wraps. Sometimes you help to make your own snack. We always wash our hands before having food.

# Lunchtime (Aspen)

---



- Children in Aspen will need a packed lunch each day.
- We are a NO NUT school.
- Packed lunches should contain a healthy balance of food, children must not have chocolate bars, sweets or fizzy drinks.

# Learning opportunities:

---

In our Early Years we value learning through play and exploration. We aim to plan these opportunities in our indoor and outdoor environment. Here are some of the fantastic opportunities that pupils at Pear Tree Mead Academy can enjoy:

- A variety of activities and areas with provision for children to access, across both nursery classrooms and the Early Years Garden.
- Forest School
- Outdoor learning in different areas of the school; our pond and woodland area.
- Swimming. Children will need a costume, swim hat and towel. Swimming costs £2 a week.
- A challenging and enabling learning environment.

If you would like to find out more about the Early Years Foundation Stage then visit this website: <https://www.foundationyears.org.uk/>. You can also find out more about our Early Years by visiting the school website: <http://www.peartreemead.essex.sch.uk/school-life/curriculum/>.



- At Pear Tree Mead we are extremely lucky and proud to have a furry edition to our staff. His name is 'Numbers' and he is a qualified dog mentor.



Numbers is currently training on the job and learning what it is like to be a part of our amazing team. He has four handlers - Mrs Arnould, Mrs Peden, Mrs Davies and Mrs Thurgood.

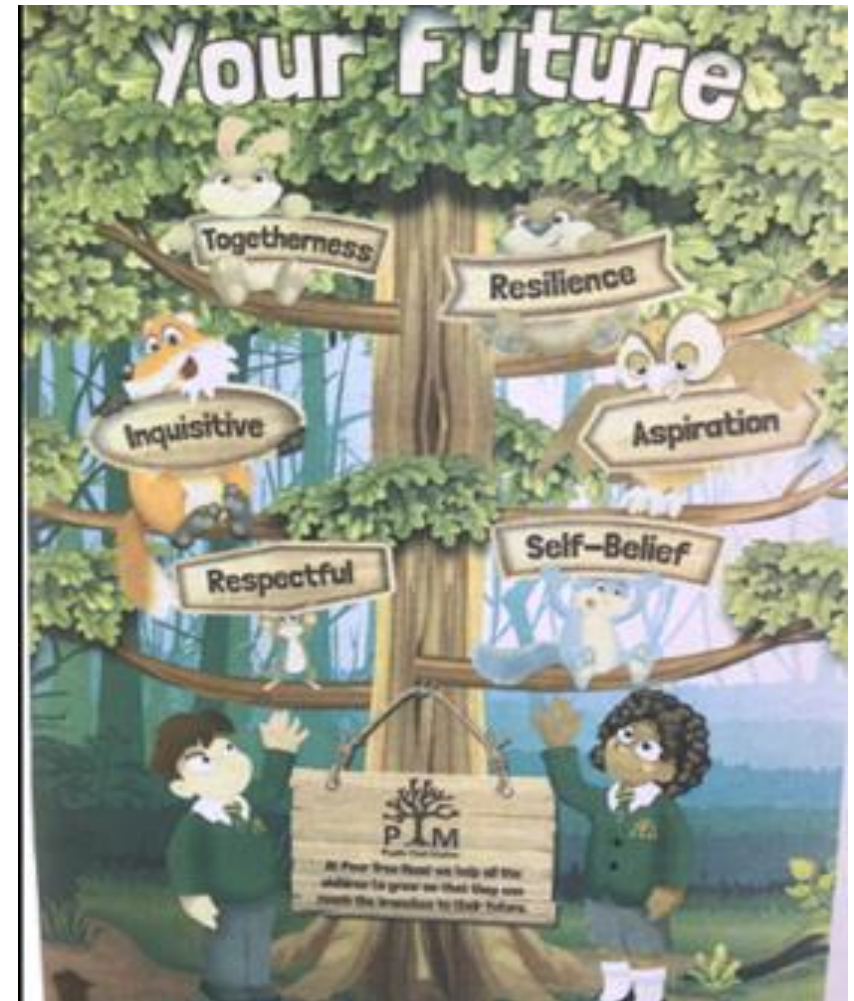


Numbers works with the children, settling them into school, becoming a listening ear and someone that they can share their thoughts with. All children will be educated on the rules we follow when around Numbers.



# Pear Tree Mead Academy – *school vision and motto.*

---



# School Branches:

---

In the Early Years we focus on the first three branches:



# Behaviour:

---

## **Pear Tree Mead Academy Expectations**

**Be Ready** – ready to learn, ready to inspire, ready to listen

**Be Kind** – kind to others, kind to ourselves

**Be Safe** – safe in what we are doing, where we are, what we are accessing

# BEHAVIOUR

---

# Other Recognitions

---

- Children can receive a Headteachers Award for excellent work and effort in their learning.
- Children are rewarded in several ways. Staff give out stickers, certificates and lots of praise.

# What if you are not doing the right thing

---

- Appropriate consequences will be given, taking into consideration the child
- We will communicate behaviour and consequences with the child's parents where necessary, and only that of their child, not any other pupils' involvement
- In extreme instances, where behaviour is continuous, over time, or for one large incident, the pupil may face expulsion for a fixed period (this will be communicated with parents and formally by letter). Incident(s) can include the pupil putting themselves or others at risk, safety of them or others and/or verbal/physical harm.

# Attendance at PTM

---

- Will your child be a PTM Attendance Hero next year?
- Being here every day and on time really helps your child be happy, successful and get the very best from their education.



Did you know...

That just being late regularly can soon build up many hours of lost learning.

---

## Getting Your Child to School Really Matters



### Did You Know... ?

In a School Year, If Your Child is Late Every Day By...

Your Child Would Have Lost Approximately...

or They Would Have Missed Approximately...

**5 Minutes**

**3.5 Days from School**

**20 Lessons**

**10 Minutes**

**7 Days from School**

**41 Lessons**

**15 Minutes**

**10 Days from School**

**55 Lessons**

**20 Minutes**

**14.5 Days from School**

**82 Lessons**

**30 Minutes**

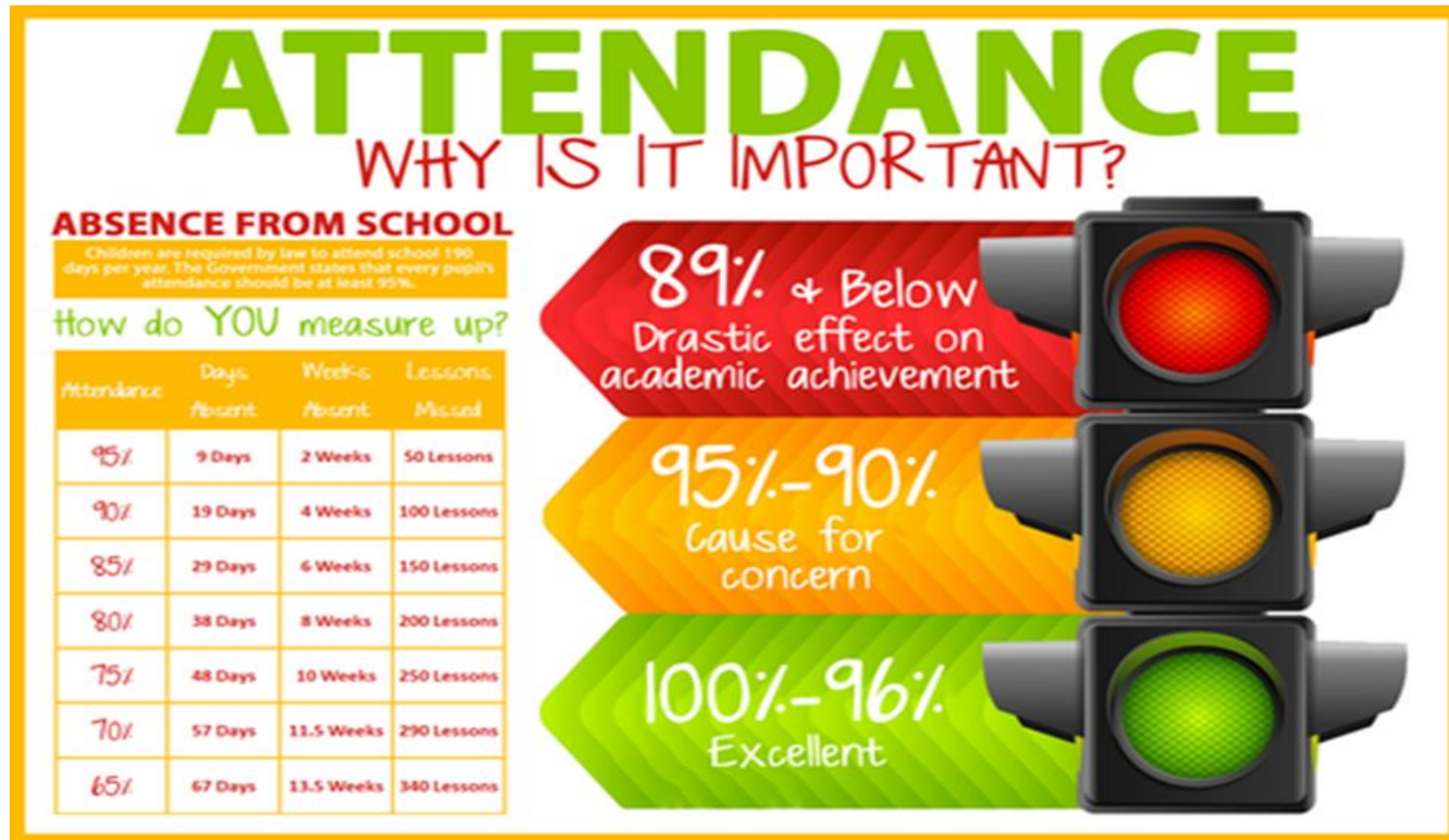
**22 Days from School**

**123 Lessons**

**Please Encourage Punctuality to Maintain Attendance**

Regular attendance is so important as just 2 weeks off school in a year will mean you child misses 50 lessons .

---



For more information on the school's policy regarding attendance please visit

[Attendance – Pear Tree Mead Academy](#)

# Useful websites:

---

These are some useful websites for you to use across the year :

- Busy Things [www.busythings.co.uk](http://www.busythings.co.uk) This is a fun educational website which has activities for a variety of early learning areas.  
Username-home5826 Password-peartree
- Letter join website for handwriting letter practise <https://www.letterjoin.co.uk/log-in.html>
- Topmarks website for EY games [www.topmarks.co.uk](http://www.topmarks.co.uk)

# Sharing your child's learning:

---

Your child will choose a sharing book in school. They will take this home; this is a story book that you can enjoy reading together.

We may set challenges on Tapestry for you to complete.

We ask for any of the learning above to be recorded on Tapestry.



# Who to talk to:

---

If you have anything that you would like to talk about then the first point of call is always the Nursery Leader, Deputy or any of the learning support assistants. We are very happy to talk. We don't check book bags daily, so please hand any letters to the staff member at the door.

If you would like to talk at the end of the nursery day please wait until children are safely let out of the classrooms first.

If you feel that after speaking to a member of the class staff you still need to speak to someone else then please contact the school office as they will be able to point you in the right direction of who is best to speak to.

# Can you help us?

## PEAR TREE MEAD ACADEMY GOVERNOR RECRUITMENT



**The Governing Board is in urgent need of parent views to expand our capability. At present, the Board is under-represented in this area, leading to limited capacity for Governors to make sure the school is led adequately with all views represented. Without your help, this could put us at risk at our next Ofsted visit.**

We need to recruit two people who can represent parents' views on the Governing Board. As a volunteer parent governor, you will have input to the way our school runs, and your invaluable point of view can help to shape our children's futures. You should be excited about helping the school in being the best it can be, so that it will make our children exceptional. You should be able to attend board meetings in the evening – these are currently done via Zoom and are three per term. You will be allocated part of the school or curriculum to oversee, and this may involve meeting with teachers during school hours, or asking questions by email.



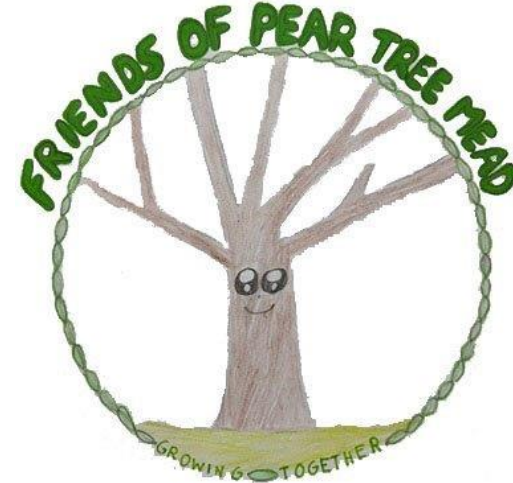
You do not need any formal qualifications, but you must be IT literate. At the very least you should be confident in using email and electronic communications (e.g. Zoom). All we ask is that you are an independent thinker who is able to bring a parent's view to the table, and that you are interested in getting involved in your children's education. In return, you will get full training, and will be part of a friendly team.

***Think you might be interested?***

***Please contact the school ([kate.townsend@peartreemead.essex.sch.uk](mailto:kate.townsend@peartreemead.essex.sch.uk)) & someone will get back to you. Please provide a bit about yourself, and why you think you might be suitable for the role.***

# 'Friends of Pear Tree Mead' (FOPTM)

## How do we fundraise?



- We are a community of volunteers who help out at events hosted by FOPTM, it's a way to meet other parents and make new friends whilst supporting the school.
- We run a variety of events throughout the year with the aim to ensure that whilst profitable, our events are affordable to all families.
- Some of our events are for pupils only, but we also run family events after school, in the evenings and at weekends
- We run present sales at Christmas, Mothers Day and Fathers Day to enable children to choose a pre-wrapped gift
- At all school productions we sell to order from a selection of production photos taken during the class dress rehearsals.
- We also raise funds by using our clothing bin, pre loved uniform and asking organisations to match funds on stalls at larger events like our Summer fete and Christmas Bazaar.
- FOPTM is a separate entity to the school – If the school want FOPTM to fund something they have to request it in writing and it is put to a vote at our termly FOPTM meeting. Equally, if we want to run an event at the school, the school staff are given the option to assist on a voluntary basis
- All FOPTM can be found on our FOPTM facebook page. Please join for more information

Events include:

Halloween Disco  
Disco  
Easter Fayre  
Christmas Bazaar  
Summer Fete  
Summer Splash  
Break the Rules Day  
Present Sales  
After School Film Club  
Family Race Night  
Singo Bingo  
Production photos  
After School Cake Sale

- **We have a small team of parent volunteers who work tirelessly to manage the collection and sale of pre-loved uniform. Please ask if you need any pre loved uniform or donate any if you have anything to donate.**



We also have a clothes bank at the front of the school. This is collected regularly and money is donated to the school.

# What have we funded?

World Book Day Play  
Christmas Panto  
New bins around the school  
Welly Storage  
Supported Young Voices  
Bikes and Scooters for Opal  
Opal equipment  
Curtains for the small hall  
Outdoor Gym  
Pond works  
Swimming pool works  
Climbing frames





## Proud sponsors of:

Jukes Estate Agents Harlow are delighted to announce a fantastic referral scheme which can help raise much needed funds for Pear Tree Mead Academy



If you, or anyone you know in Harlow or surrounding areas are thinking of selling your property, Jukes Estate Agents Harlow will:

1. Value it FREE OF CHARGE
2. Sell it with NO AGENCY FEES
3. Market it better than ANY other agent
4. Donate £500 to The School on completion of sale.

***How good are we? Ask Executive Head Emma Bloomfield.***

***We sold her house in 10 days and for full asking price. When it completes, the school will be £500 richer! So call us today.***

# 01279 295524

We are pleased to work in partnership with local estate agent Jukes. As part of our work with them, they will be sponsoring all PCLC schools, helping to fund new sports kits for our teams, supporting resources needed for our curriculum work as well as providing help to our PTAs.

In addition to this Jukes will donate £500 to the school for any property sale they make. So if you, anyone in your family, a friend or neighbour are looking to sell your home, please consider using Jukes Estate agent, give them our name and we will receive £500.

# How can you help?

Every event we run requires manpower to source materials, set up, and host the event on the day. Without parents who are willing to give up their time, we simply would not be able to run things like school disco's, present sales, fetes and bazaars – All the things we know the children love!

**We are desperately short of volunteers, with quite a few of our 'regular' parent helpers moving on to secondary school this year.**



A red poster with a crown at the top and the text "WE'RE TRYING TO KEEP CALM BUT WE NEED YOU!!" in white capital letters.

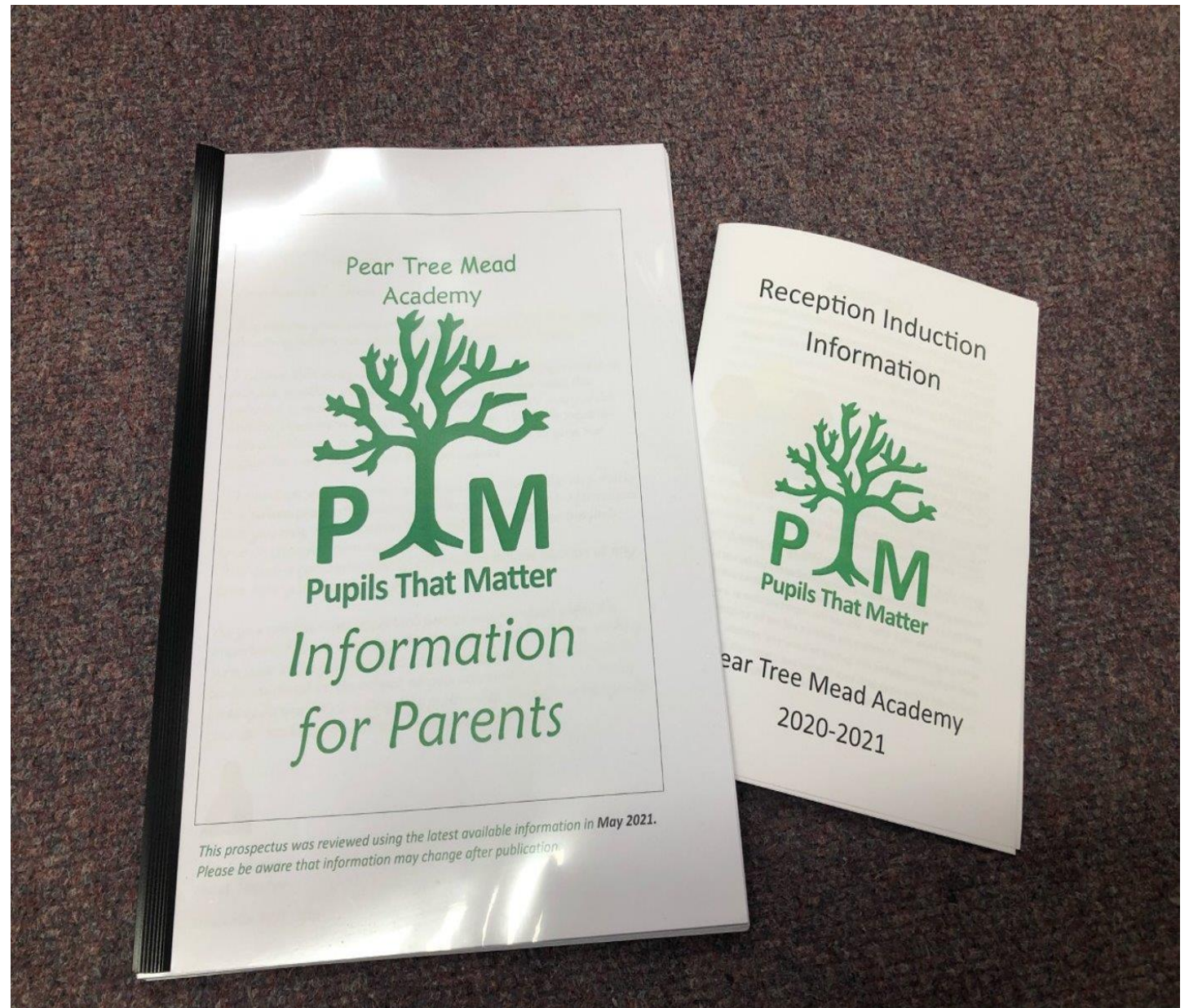
If you would like to get involved, please come along to a meeting to see what you can do to help – You can give up as much or as little time as you are able and there are always a variety of tasks to suit everyone's individual commitments and skills. Our meeting dates are published via parent mail and our facebook page, which will also keep you up to date with upcoming events where help is needed.

# For more information

---

- Please read the information that we have sent you and check out our school website

[www.peartreemead.essex.sch.  
uk](http://www.peartreemead.essex.sch.uk)



# Transition Visits

---

These PowerPoints will be on the school website for you as soon as possible.