



Pupils That Matter

**WELCOME
TO YEAR 4**

2024/2025

Year 4 - Teachers



Miss Parr

Pine Class



Mr Humphries

Oak Class

Year 4 – Learning Support Assistants (LSAs)

LSAs will be working across both classes throughout the week



Mrs Webb



Miss Humphreys



Mrs Fleming

Oak Classroom



This is Oak classroom. We will be sharing our cloakroom and toilets with Hazel class - this is where you will hang your coat and bag. One of the pegs will have your name on so you know where to put your things.

Pine Classroom



This is Pine classroom. You will need to go up the stairs to access it. On the left-hand side as you enter the classroom is the cloak room. This is where you will hang your coat and bag. One of the pegs will have your name on so you know where to put your things.

Where will you wait in the morning? Oak Class



When you arrive in the morning...

Where will Pine wait in the morning?



Entrance
to Pine Class

Mulberry class

When you arrive in the morning you will need to hang your things on your peg and place your reading books and reading diaries in the box. There will be a morning activity waiting for you to complete.

What will a day look like in Year 4?



From the very beginning of the school year, we ask for parents to say goodbye at the door and to not enter the classrooms. From September, there will be new timings to the school day.

Doors open at 8.40 am

Door close at 8.45 am

Registers will begin at 8.45am and close at 8.50am, after this point children will be recorded as late.

The school day will end at 3.15pm.



Throughout the day we will be doing a lot of learning. There will be morning English and Maths sessions and an afternoon topic session. Reading will take place daily.

The children will hang their coats in the cloak room (each will have their personalised hook) and put their lunch boxes on the trolley.



When all the children are ready and settled, we will check the register and commence our learning.

The children who are having school dinners will order their meal via our school lunch system.



Children are allowed to bring in a piece of fruit to eat during their morning break.

Having completed the learning for the day, we will see the children out. Please let staff know if someone different is picking up your child and that they have the correct password.

Our Learning

We are very excited about our learning next year, with a new and interesting curriculum!

In Autumn term we are going to be learning to be painters, sculptors, architects and designers.

We will learn about the stages of making a painting, including developing ideas, sketching compositions and figures and applying paint in a variety of ways (and not just with brushes!) to achieve different visual effects. We will learn about the materials of sculpture and how to plan with sketches and then create dynamic artworks. We will also look at a range of work by different architects and designers.

Our Learning

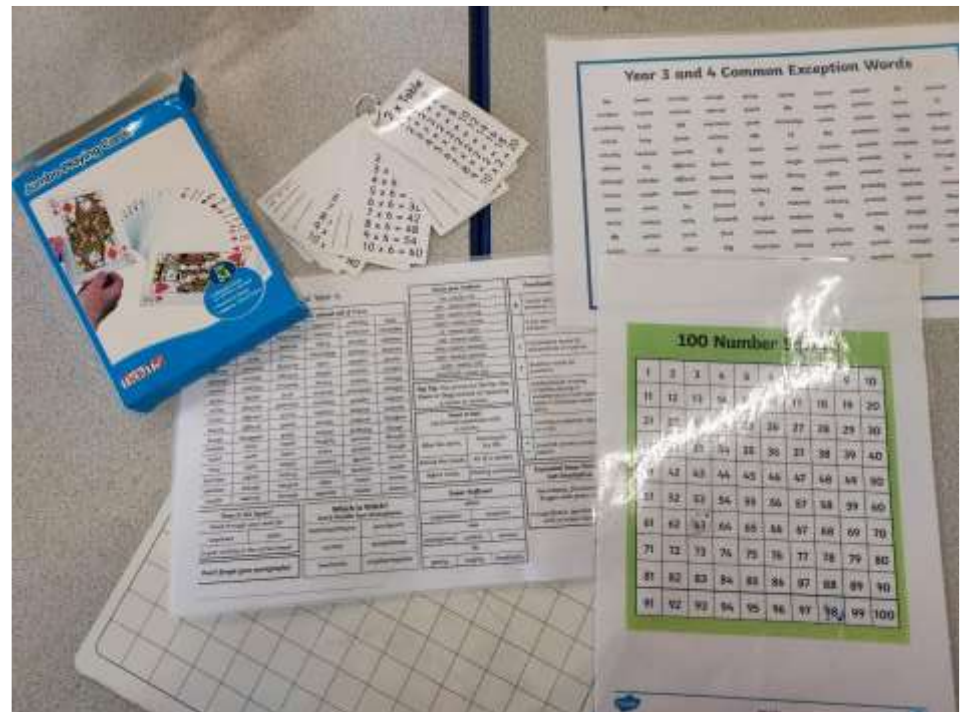
Spring Term – Together, can we save the world?

The children will be learning how to save the rainforests! We will be investigating the link between deforestation and climate change. The children will create a climate change information video to raise awareness and begin to take action and make insect animal homes, bird feeders and plant our own mini forests and gardens. We will be promoting awareness of this important issue and so much more.

Summer Term – Does the past shape our future?

We will be focussing this half term on the Anglo Saxons. Through a study of the broad social context of the Anglo-Saxon period, children will learn how this important group of settlers fits into the chronology of Britain and decided whether the past has shaped the world in which we live.

Resources to aid our learning



Outdoor Learning

In Year 4 we try to take learning out of the classroom as much as possible as we believe that this supports the children in their learning.



OPAL PROGRAMME

We are really pleased to be continuing with our OPAL programme in September.

Children spend over 6 hours of their school week playing at break and lunch times. The opal project sets out to give children a wide variety of play experiences.

At PTM this includes over the two playgrounds – bikes and scooters, sand pit, digging area, book nook, building blocks, mud kitchen and small world toys. Over the year these areas will expand hopefully into water areas, den building, performing and much more.

Children will start the year on rotas to visit the different areas, this should move into free flow. Some areas of our OPAL play spaces children must have wellies to use. Children are advised to have a spare pair of clothes with them incase they get muddy or wet. There is an opal sway for you to see what goes on during an opal playtime.

We are always looking for OPAL donations and parents to help us out with new areas around the school. We are currently looking for someone to build us a stage from pallets and a stone area for our clean water systems space.



PE and Swimming

Please ensure that the children have the correct kit in school with them on the appropriate days. Each item needs to be clearly named.

For PE, your child should have:

Top (house colours – School crest)

Joma Shorts (black with school crest)

Sports socks (black)

Black trainers or plimsolls

You may wish to provide your child with Joma tracksuit bottoms (black with embroidered school crest) and a Joma tracksuit top (black with embroidered school logo) for the colder months.

For swimming, your child should bring in a swimming costume, towel and swim hat.

PE and swimming dates will be confirmed in September.

PE and Swimming



Combi House T-Shirt
with School Crest

£9.60/
£11.35

Size	2yrs*	4-6yrs	8-10yrs	12yrs	14yrs*	SML*
JNR						
SNR						



Joma Short (Black)
with School Crest
£8.20/£9.60

Size	2yrs*	4-6yrs	8-10yrs
JNR			
SNR			
Size	12yrs	14yrs*	SML*
JNR			
SNR			



400054.100

Joma Sports Socks
(Black)
£4.90

Size	12-2	3-6	7-12
JNR			
SNR			



100086.100

Joma Tracksuit
Top (Black)
with School Crest £15.55/£18.20

Size	4yrs	6yrs	8yrs	10yrs	12yrs	14yrs*	SML*
JNR							
SNR							



9016P13.10

Joma Tracksuit
Bottoms (Black)
with School Crest £15.20/£18.70

Size	4yrs	6yrs	8yrs	10yrs	12yrs	14yrs*	SML*
JNR							
SNR							



Joma (Black) Rain Jacket
with Embroidered
School Crest £14.15/£16.9!

Size	4yrs	6yrs	8yrs	10yrs	12yrs	14yrs	SML
JNR							
SNR							



BG10

Drawstring Bag (Bottle)
with Printed School Crest
£5.75

Labelling Uniform

It is very important to label all of your child's uniform/belongings.

Below are two companies who can help with this. By choosing one of the following, you will not only have solved the problem of how to label uniform but also be supporting Pear Tree Mead Academy!

Stamptastic –

https://stamptastic.co.uk/#a_aid=5edcc47baf3eb

School Affiliate ID: 5edcc47baf3eb

School PTA Code: CM187BY

My Name Tags - <https://www.mynametags.com/>

School code - 68o6

School Uniform

At Pear Tree Mead we feel that wearing school uniform is really important. It brings us together as a school team.

- Round Neck Sweatshirt or Cardigan with or without Embroidered School Crest (Bottle Green)
- White polo shirt/blouse
- Grey trousers/knee length skirts
- Shorts and summer dresses can be worn in warm weather.
- Black shoes (with suitable heels) or trainers (with black shoelaces)
- White, black, or grey socks or tights
- Green hair bands to be worn – no large bows.
- Children in Year 3 and upwards have a school tie as part of their school uniform. This is expected to be worn every day.

School PE kit (To be bought to school to get changed into)

- House Coloured Top with School Crest
- Joma Short (Black) with School Crest
- Black trainers or plimsols
- Swimming costume, towel, and swim hat.
- Children in the colder weather will need an outside tracksuit, this must be plain and a dark colour. School Tracksuits are available for our uniform supplier.

The school has a uniform and children are expected to adhere to this. The children wear their uniform with pride and should be smart with shirts tucked into trousers or skirts.

School uniform is supplied by Create Identitee, it can be ordered directly with them at their shop Unit 43 Greenway Business Centre, Harlow, Essex, CM19 5QE, or over the telephone 01279 456016. Order forms and samples of sizes are available at the school office.

Lost Property – all named lost property will be returned to classes. All unnamed items are kept outside the office for parents to come and look through.

The FOPTM team run a second hand uniform sale if you require any extra support.

Homework at PTM

- To help support children in school and to prepare them for their next stages of education children at PTM are asked to complete weekly homework. This is not expected to take a long time and should be appropriate for the age of your child.
- Children will be given a homework book at the beginning of the year and this is where homework should be completed.
- Children have regular daily / weekly homework to complete. This is daily reading, practising weekly spellings and number facts. Records of these can be shown in homework books or practised on online programmes. Teachers will share ideas of how children can make practising these fun and we will put lots of other ideas on our school website.

Homework Webs

- Children will then also be given a choice of other weekly homework to complete. This will be provided on a homework web and will be stuck inside their books. This web will tell you all the homework for the half term. There will be many options for the children to choose and they can pick a different task each week. (They can choose more than 1 if they wish) Some tasks will take longer than others and so you can pick and choose what works for you as a family.
- Evidence of this homework should be written or stuck in homework books or if it is digital (eg a film recorded) can be emailed to the class teacher.
- Teachers will look at homework each week and share good examples with the class. House points and HTAs will be given for good effort.
- There is a half termly craft project that may be completed over more than 1 week if needed.

Homework - reading...



- Children will be given a **rainbow book** – these are a coloured banded book and are at the level that the children are reading at. Children will work through the levels – there are new book marks for each colour as they progress through.
- Children will also be given a **library book** to read. These will be from their correct phase of books from the library.
- Children will be encouraged to change their library book and rainbow book in the library after school or in class once a week. Children will alternate between a rainbow book and a library book to read.
- 50 minutes of reading will need to be completed over the week. At least half being listened to by an adult or adult discussion about the text.

Lunchtime Information

- [SILVER New Intake Brochure.pdf](#)
- Above is some more information about our school dinners. This is available at the end in paper copy if you would like one.
- Children can have a school dinner on each day that they book one. Children can change between school and home lunches each day as required.
- Children who have allergies will not be able to have a school dinner until their special menu is agreed. If your child has any allergy you will need to complete the correct forms and then wait for an agreed menu.
- Copies of the school menu for September are available at the end if you would like one. A new menu will start after October half term and this has been designed by the children.



School Dinners

We recognise that varied and balanced diet is essential for maintaining both physical and mental health in children. We try to introduce lots of new delicious and nutritious options. We are also doing our best to provide foods with reduced amount of sugar.

- Each lunch menu provides meat and meatless option and a cold desert.
- Salad bar- the pupils will be offered a selection of different vegetables and salads which are prepared in 'easy to eat' ways, so they can pick and choose what they like the best.
- Special diets- if your child has a special dietary needs due to allergy/intolerance or medical reason, they can be provided with a bespoke menu. A special diet referral is available from school reception in both electronic and paper format. Please complete the form and return it to the school office with supporting medical documentation.



Free School Meals and Pupil Premium Funding

Please remember to apply for Free School Meals if your child is going into Year 3 or above. It may be that your circumstances have changed.

The universal free school meal that your infant child may receive will now stop as they enter Year 3 and you will be charged for their meals.

To apply please visit, essex.gov.uk – Free School Meals

In Year 4 if you are not entitled to FSM then you will need to be paying for school dinners via our school app. We work on a no debt policy so please keep up regular payments.

Do you receive one of the following?

- Income Support
- Income-based Jobseeker's Allowance
- Child Tax Credit (not Working Tax Credit), with an annual income below £16,190
- Pension Guarantee Credit
- Employment and Support Allowance, income related
- Support under part 6 of the Immigration and Asylum Act, 1999
- Working Tax Credit run-on, paid for 4 weeks after you stop qualifying for Working Tax Credit
- Universal Credit, with a household income of £7,400 or less (after tax and not including any benefits you get).

If so, please apply between 25 July and 10 August to ensure that your application can be considered before the start of term

School App and Contacting you.

- Please make sure that the school has your most recent details so that you can be contacted via the phone or through group -calls and that you have access to the school app. (Parentmail)
- PTM are nearly cashless – please make sure you set up your parentmail app and make payments through it. Swimming is to be purchased next year via the app too.
- The school is fully paperless and all information can be found on the school app and website.

Pear Tree Mead Academy – School Vision and Motto



Behaviour - PTM Branches

At Pear Tree Mead we help all the children to grow so that they can reach the branches to their future.

To become a fully grown citizen, children need to reach the branches of the Pear Tree.



Pear Tree Mead Academy Expectations

Be Ready – ready to learn, ready to inspire, ready to listen

Be Kind – kind to others, kind to ourselves

Be Safe – safe in what we are doing, where we are, what we are accessing

BEHAVIOUR

Behaviour expectations

Children are expected to:

- Focus on their learning
- Work hard
- Use kind hands and bodies
- Use kind words
- Support each other in their learning
- Work together in pairs or groups
- Put their hand up to speak
- Stay in their seat when it is learning time
- Follow the school behaviour policy.
- We use house points, stickers and Class DOJO as reward systems.
- Most importantly – have fun, laugh, make great memories, learn lots and go home smiling!



Behaviour Recognition

Children receive recognition for work, expected behaviour and effort. We have a structured behaviour system where children can be recognised for exemplary behaviour (above and beyond) or for reaching (or striving towards) each branch on the tree (achieving the skill).

Positive note home – this is a certificate that is given to a child when they have shown behaviour that is 'above and beyond' – this is for them to take home. Positive notes home are also given to visitors to the school, who have the opportunity to give then to a pupil if they see exemplary behaviour.

Each positive note home is recorded on the class recognition chart. When pupils have enough positive notes home, they will receive a phone call home! Further notes home will amount to them being invited to a 'hot chocolate day' run by the Headteacher, Deputy Headteacher or Assistant Headteacher, where children will have a little hot chocolate treat and time with the leaders of the school. When attending, children can also collect a Headteachers award!

Headteachers Awards are also awarded for hard work and exceptional effort in class.

Other recognitions





- The children are arranged in house teams and can earn points for their house. The houses are Griffin, Lion, Unicorn and Dragon . House points are given out with a maximum of 5 at each occasion. A special treat is organised for the winning team each half term.
- Children can receive a Headteachers Award for excellent work and effort in their learning.
- We also have a 'Thank You' box in the main office where staff, parents and children can write messages of thanks to all school groups. These are shared in Assembly. This supports well-being within the school across all stakeholders.
- At lunchtime, our MDAs oversee the hall and playgrounds. We have agreed protocols for the children. Mrs Burke oversees the MDAs and liaises about behaviour. We run a recognition stripe at lunchtimes, where individual children are given a strip of paper to recognise their super behaviour at lunchtimes. This is to add to the paper chain that they are creating in class, when the children have collectively achieved 100 recognition stripes, they earn themselves extra play/lunchtime.

What if you are not doing the right thing

- Appropriate consequences will be given, taking into consideration the child
- We will communicate behaviour and consequences with the child's parents where necessary, and only that of their child, not any other pupils' involvement
- In extreme instances, where behaviour is continuous, over time, or for one large incident, the pupil may face suspension for a fixed period (this will be communicated with parents and formally by letter). Incident(s) can include the pupil putting themselves or others at risk, safety of them or others and/or verbal/physical harm.

Zones of Regulation

The ZONES of Regulation®

			
BLUE ZONE Sad Sick Tired Bored Moving Slowly	GREEN ZONE Happy Calm Feeling Okay Focused Ready to Learn	YELLOW ZONE Frustrated Worried Silly/Wiggly Excited Loss of Some Control	RED ZONE Mad/Angry Terrified Yelling/Hitting Elated Out of Control

- At Pear Tree Mead we teach the children important skills in regulating their own emotions and understanding the emotions of others. We start this learning in Reception where the children learn through the Zones of Regulation curriculum. The Zones are four coloured zones that relate to different types of emotions. The children will be taught how you may look, feel or behave when you are in these zones and how it is okay to feel different emotions. They will begin to be taught how to use different tools to regulate their emotions.

- If you would like to find out more, please visit our website: [Pear Tree Mead Academy - The Zones of Regulation](#)

Clubs



The Treehouse Club

- We have a breakfast Club that runs every day – this is £3.50 and is run by the school.
- This can be booked via Parentmail
- We have an after-school club run by the school. This is booked via Parentmail.
- The Treehouse Club runs between 3.15pm and 4.15pm for a themed activity session.
- Night Owls runs between 4.15pm and 6pm. Children have a small snack in Night Owls.
- Registration forms must be completed for Breakfast Club and Our After school Club.
- Children can join Rock steady – rock band at PTM. This is run by an external company and has a termly charge. You can find out more information from <https://www.rocksteadymusicschool.com/>
- Watch this short video to see what learning in a band could do for your child's well-being: <https://www.rocksteadymusicschool.com/watch-video/>

Attendance – Every Day Counts

Will your child be a PTM
Attendance Hero next year?

Being here every day, and on
time, really helps your child be
happy, successful and get the very
best from their education.



Attendance

Did you know...

being late regularly can soon build up many hours of lost learning?

A pink alarm clock with two bells is shown on the left. To its right is a yellow speech bubble with a jagged edge containing the text 'WAKE UP!' in bold black letters. The background of the entire graphic is a dark blue gradient.

Getting Your Child to School Really Matters

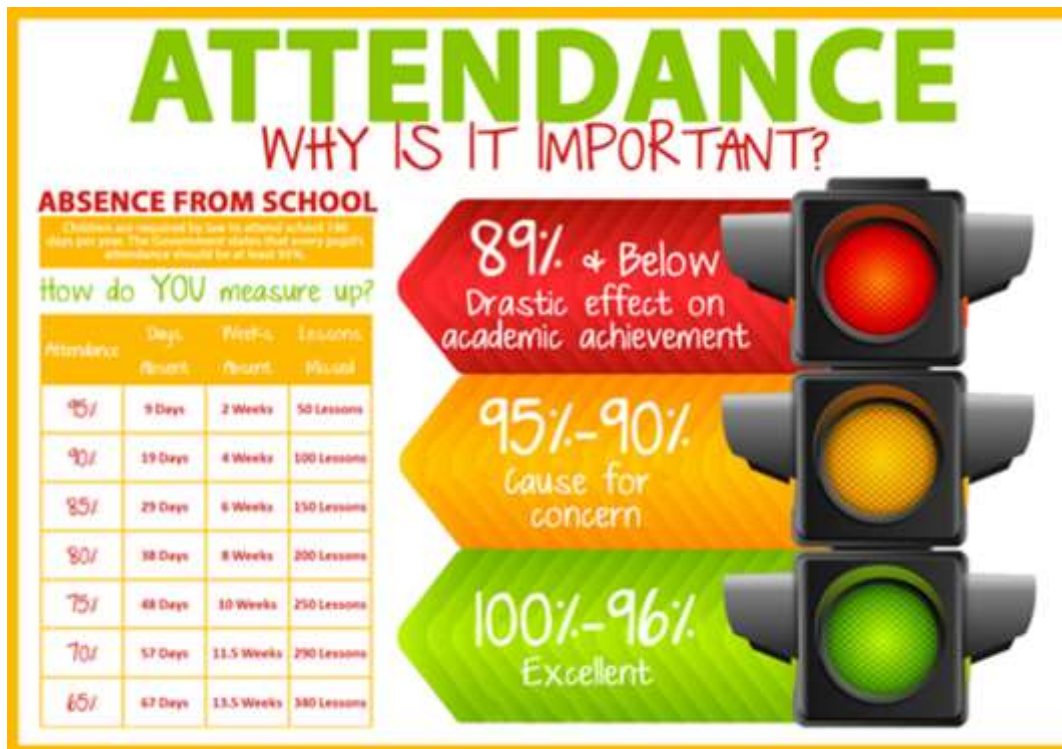
Did You Know... ?

In a School Year, If Your Child is Late Every Day By...	Your Child Would Have Lost Approximately...	or They Would Have Missed Approximately...
5 Minutes	3.5 Days from School	20 Lessons
10 Minutes	7 Days from School	41 Lessons
15 Minutes	10 Days from School	55 Lessons
20 Minutes	14.5 Days from School	82 Lessons
30 Minutes	22 Days from School	123 Lessons

Please Encourage Punctuality to Maintain Attendance

Attendance

Regular attendance is so important as just 2 weeks off school in a year will mean your child misses 50 lessons!



For more information on the school's policy regarding attendance please visit our website:

[Attendance - Pear Tree Mead Academy](#)

Assessment

Your child will be assessed throughout their learning, in day-to-day tasks but they will also encounter formal assessments for English and Maths on a termly basis. The tests we use are called NFER, and aim to guide teacher assessments. Teacher assessments will be included in parent consultations and your child's annual report.

In year 4, your child will also undergo the multiplication tables check. This is an online test for pupils in Year 4. Pupils are asked to answer 25 questions on times tables from 2 to 12. They are given six seconds per question, with three seconds rest between each question, so the test should last less than five minutes. Questions about the six, seven, eight, nine, and 12 times tables are likely to come up most often, as these are the hardest for most children to learn. It's a good idea to focus on these tricky times tables with your child.

What is 'Friends of Pear Tree Mead' (FOPTM)?

- A registered charity whose aim is to fundraise on behalf of the school to provide additional resources and equipment (1040711)
- A community of volunteers who help out at events hosted by FOPTM
- A way to meet other parents and make new friends whilst supporting the school.
- A separate entity to the school – If the school want FOPTM to fund something they have to request it in writing and it is put to a vote at our termly FOPTM meeting. Equally, if we want to run an event at the school, their staff are given the option to assist on a voluntary basis
- All FOPTM can be found on our FOPTM facebook page. Please join for more information

How do we fundraise?

- We run a variety of events throughout the year with the aim to ensure that whilst profitable, our events are affordable to all families.
- Some of our events are for pupils only, but we also run family events after school, in the evenings and at weekends
- We run present sales at Christmas, Mothers Day and Fathers Day to enable children to choose a pre-wrapped gift
- At all school productions we sell to order from a selection of production photos taken during the class dress rehearsals.
- We also raise funds by using our clothing bin, pre loved uniform and asking organisations to match funds on stalls at larger events like our Summer fete and Christmas Bazaar.
- We have a small team of parent volunteers who work tirelessly to manage the collection and sale of pre-loved uniform. Please ask if you need any pre loved uniform.

Events include:

**Halloween Disco
Disco**

Easter Fayre

Christmas Bazaar

Summer Fete

Summer Splash

Break the Rules Day

Pop Up Circus

After School Film Club

Family Race Night

Singo Bingo

After School Cake Sale



What have we funded?



Provision of outdoor gym equipment



Clearing and landscaping the pond as an outdoor learning area



Replacing climbing frames in all playgrounds

Plus... The New outdoor classroom, New curtains for the main hall, outdoor educational posters, SEND resources, wet play toys, a defibrillator and repairs to pool facility!

How can you help?

Every event we run requires manpower to source materials, set up, and host the event on the day. Without parents who are willing to give up their time, we simply would not be able to run things like school disco's, film clubs, fetes and bazaars – All the things we know the children love!



We are desperately short of volunteers, with quite a few of our 'regular' parent helpers moving on to secondary school this year.



If you would like to get involved, please come along to a meeting to see what you can do to help – You can give up as much or as little time as you are able and there are always a variety of tasks to suit everyone's individual commitments and skills. Our meeting dates are published via parent mail and our facebook page, which will also keep you up to date with upcoming events where help us needed.

PEAR TREE MEAD ACADEMY GOVERNOR RECRUITMENT



The Governing Board is in urgent need of parent views to expand our capability. At present, the Board is under-represented in this area, leading to limited capacity for Governors to make sure the school is led adequately with all views represented. Without your help, this could put us at risk at our next Ofsted visit.

We need to recruit two people who can represent parents' views on the Governing Board. As a volunteer parent governor, you will have input to the way our school runs, and your invaluable point of view can help to shape our children's futures. You should be excited about helping the school in being the best it can be, so that it will make our children exceptional. You should be able to attend board meetings in the evening – these are currently done via Zoom and are three per term. You will be allocated part of the school or curriculum to oversee, and this may involve meeting with teachers during school hours, or asking questions by email.



You do not need any formal qualifications, but you must be IT literate. At the very least you should be confident in using email and electronic communications (e.g. Zoom). All we ask is that you are an independent thinker who is able to bring a parent's view to the table, and that you are interested in getting involved in your children's education. In return, you will get full training, and will be part of a friendly team.

Think you might be interested?

Please contact the school (kate.townsend@peartreemead.essex.sch.uk) & someone will get back to you. Please provide a bit about yourself, and why you think you might be suitable for the role.

PARENT GOVERNOR VACANCIES

If you have a concern or query...

If you have a concern or query at Pear Tree Mead Academy, please speak to the class teacher first. After that they will be able to direct you to someone else to speak if you would like to.

Our website shows all members of staff.

[Pear Tree Mead Academy - Meet The Team](#)

We look forward to seeing you in
September!